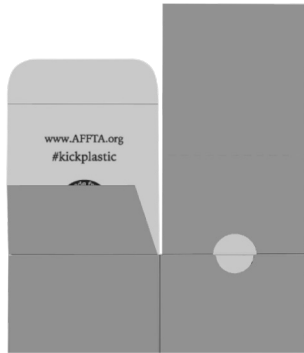


# AFFTA Box Assembly Instruction Sheet

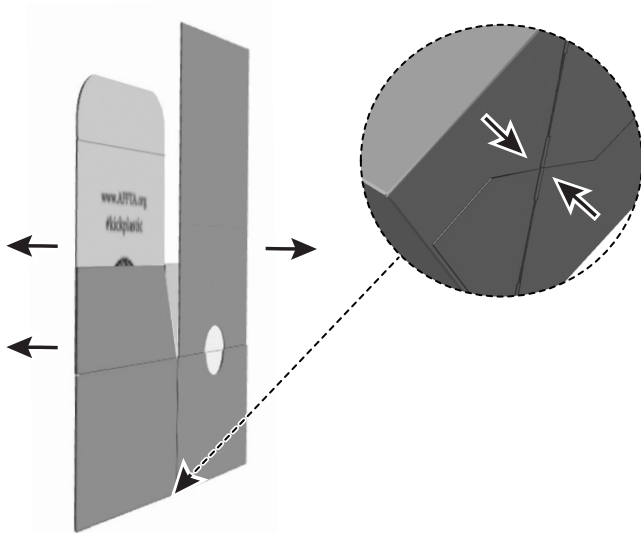
Please read through the entire instruction sheet before assembling.



(1) FLO-161959-A01 Box

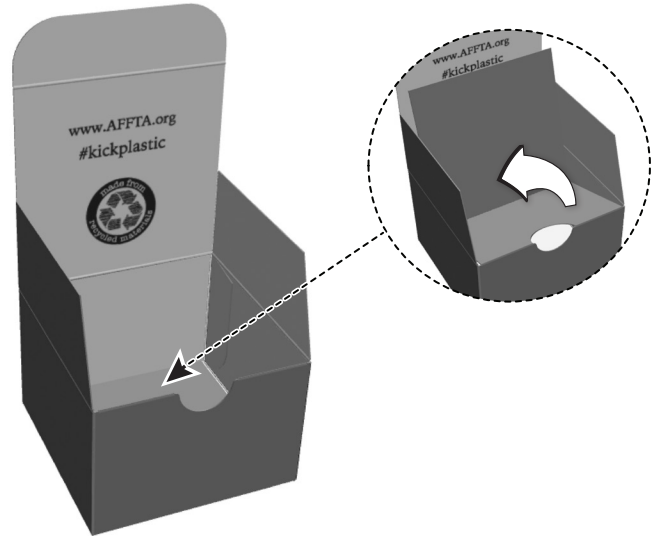
## Step 1

Open box and lock bottom into place.



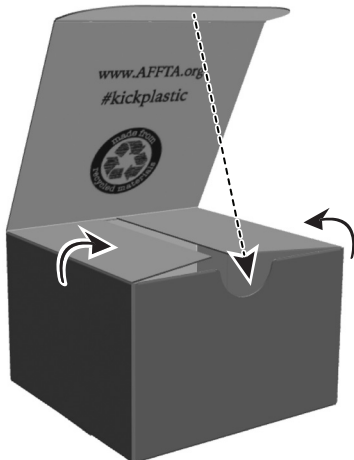
## Step 2

Fold front tab towards the inside of the box.



## Step 3

Fold side tabs. Fold rear tab inwards and insert into "U" shaped die cut area.



## Finished box

